

*School District
of Ashland*

ASHLAND HIGH SCHOOL



Adding Value to Everything We Do

The following is a list of work performed in the last 30 days:

- Completed interior demo for phase 3
- Framed and sheetrocked new partitions
- Completed masonry patches
- Taping and finishing of all sheetrock
- Painting corridors and classrooms
- Started ceiling grid in corridors and guidance offices
- Ceramic tile in corridors – Aprox. 80% complete
- Overhead mechanical and electrical rough-in
- Completed electric shut down to install new switchgear
- Completed 2nd lift of asphalt
- Completed misc. work in fieldhouse
- Re-finished commons terrazzo
- Started re-finishing of existing lockers
- Install skylights
- Started electrical work in auditorium



Exterior with Asphalt Complete



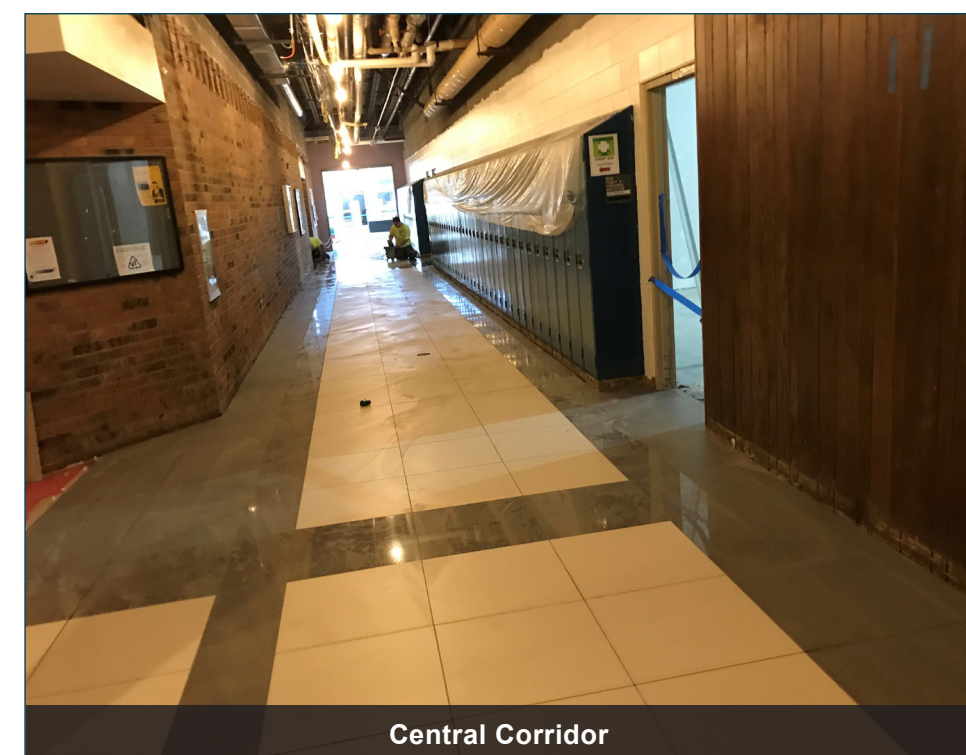
FACE Classroom

The following is a list of work scheduled for the next 30 days:

- Finish painting
- Ceiling grid, lighting, diffusers, and ceiling tile in all phase 3 areas
- Finish ceramic tile in corridors
- Complete re-finishing of existing lockers
- Install casework, marker boards, and fire extinguishers
- Doors and hardware
- Electrical devices
- Complete theatrical improvements in auditorium
- Grading site, and seeding
- Demobilize trailer and tools
- Install carpet and resilient flooring
- Final cleaning
- Owner furniture
- State occupancy inspection
- Punch list items



Classroom



Central Corridor